

Alaska Department of Fish and Game

Habitat Section
Southeast Region



191-20-13700 Tributary 2

ADDITION

Water body name:

Survey date: 7/24/2024

Quad: Icy Bay D2, D3

Species & Lifestage:

Upper Reach Latitude: 59.966337 **Longitude:** -141.706845

Survey crew: NJ, CD, DK

Lower Reach Latitude: 59.965924 **Longitude:** -141.705114

Findings: We surveyed this uncataloged stream using a backpack electrofisher, baited minnow traps, and GPS and captured juvenile coho salmon. The pond at waypoint 710 acts as the water source for the stream. It becomes a narrow, distinct channel that goes through the forested buffer and is approximately 2-4 ft wide; good rearing habitat (Table 1; Figures 1–4).

Recommendations: Add this uncataloged stream to the anadromous waters catalog for rearing coho salmon (Figure 5).

Nomination: Pending

Table 1.–191-20-13700 tributary 2 survey data.

Waypoint	Latitude	Longitude	Notes	Stream Width ft	Stream Substrate	Habitat Features	Gradient %	Sample Effort	Sample Results
710	59.968729	-141.704387	Large pond with deep water, maybe source of tributary that crosses road. Set in minnow trap in pond to soak overnight. No fish.						No Fish
719	59.966303	-141.705833	Channel continues down, no ponds entering. Several feet in elevation lower than the ponds.	2-4	Sand Fine Organic		1-2	VI	6 CO
721	59.965957	-141.705112	Tributary enters main channel on stream left.	2-4	Small Gravel		1-2	EF	2 CO
747	59.966378	-141.706774	Channel reforms downstream of pond complex, decent amount of flow, nice substrate.					EF	2 CO



Figure 1.–Juvenile coho salmon caught at waypoint 747.



Figure 2.–Pond at waypoint 710.



Figure 3.–Channel at waypoint 747.



Figure 4.–Channel at waypoint 719.

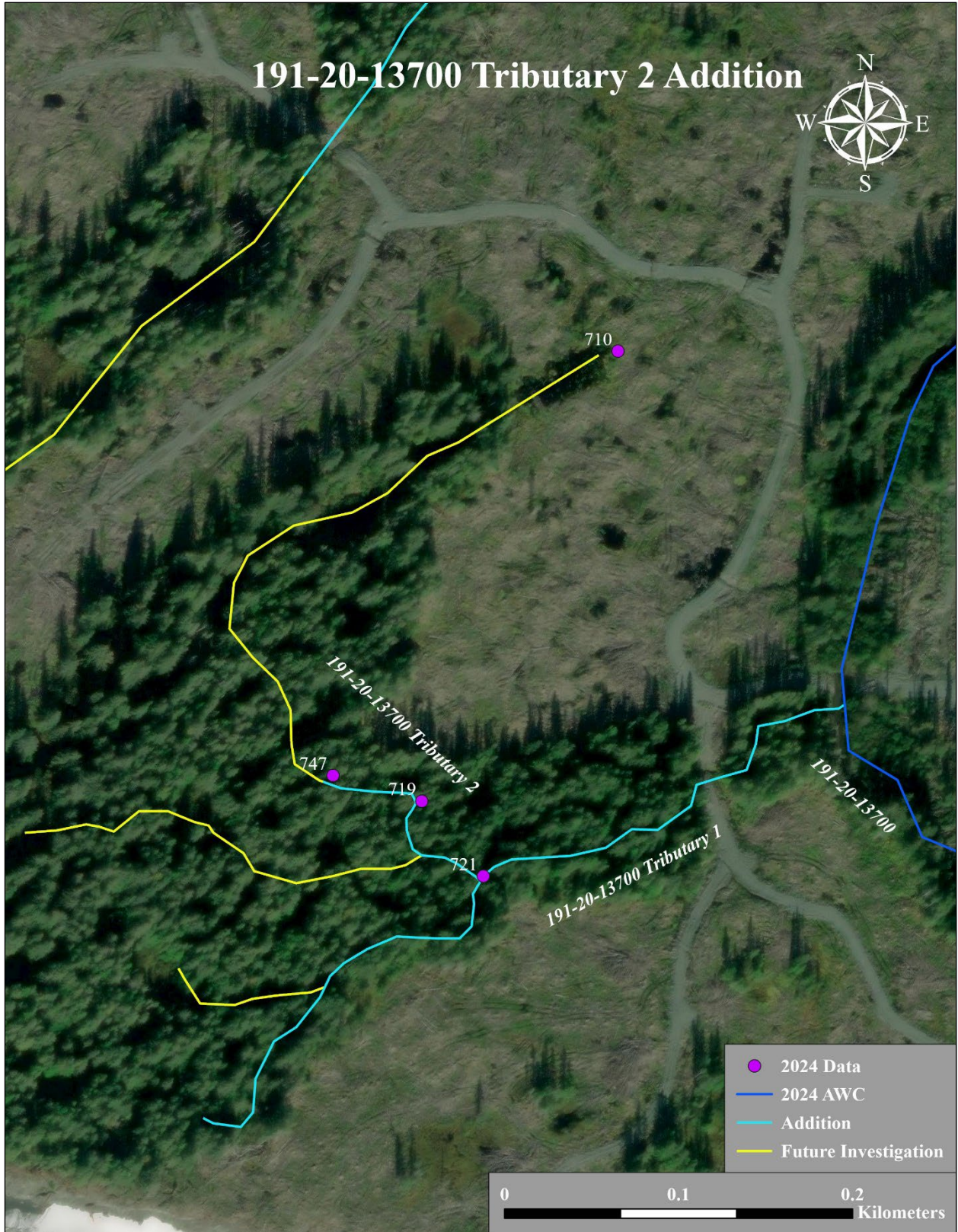


Figure 5.—191-20-13700 tributary 2 addition map.

